

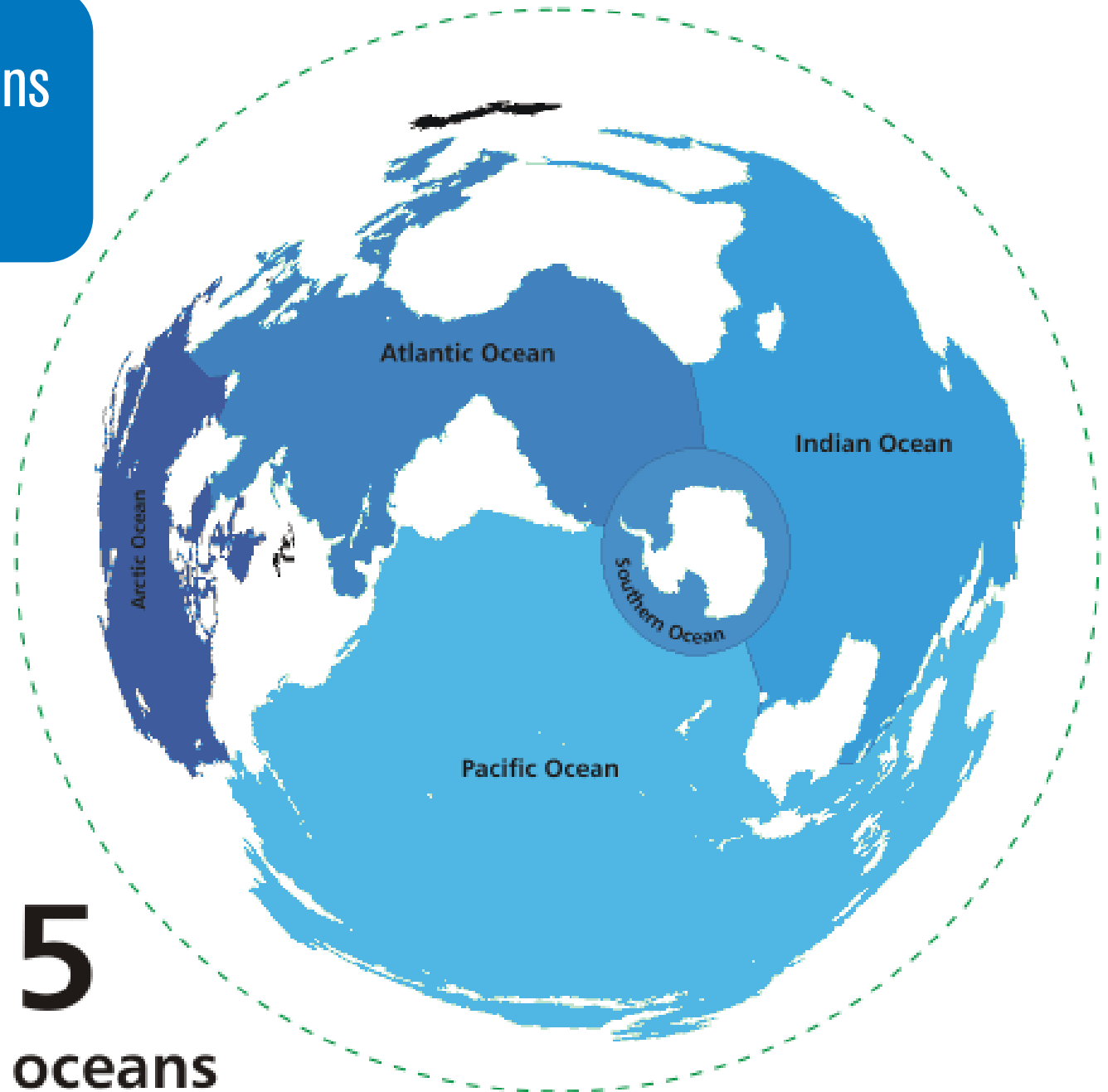
CORAL OCEANS

Lesson 1: Coral Explorer

A blue speech bubble with a white question inside.

How many oceans
are there?

How many oceans
are there?



5
oceans

Why is the ocean important?

50%-70% of the oxygen you breathe comes from the ocean

The ocean is the #1 source of protein for 1 billion people

The ocean helps to regulate our climate

The ocean contains 95% of the living space on the planet

How much of the Earth's surface is covered by the ocean?

- (a) 34%
- (b) 51%
- (c) 71%
- (d) 83%

The ocean is not just one habitat but many habitats, just like on land...

Here's some examples of ocean habitats...



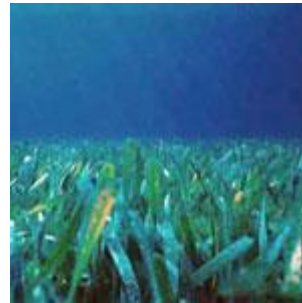
Open ocean



Rocky shore

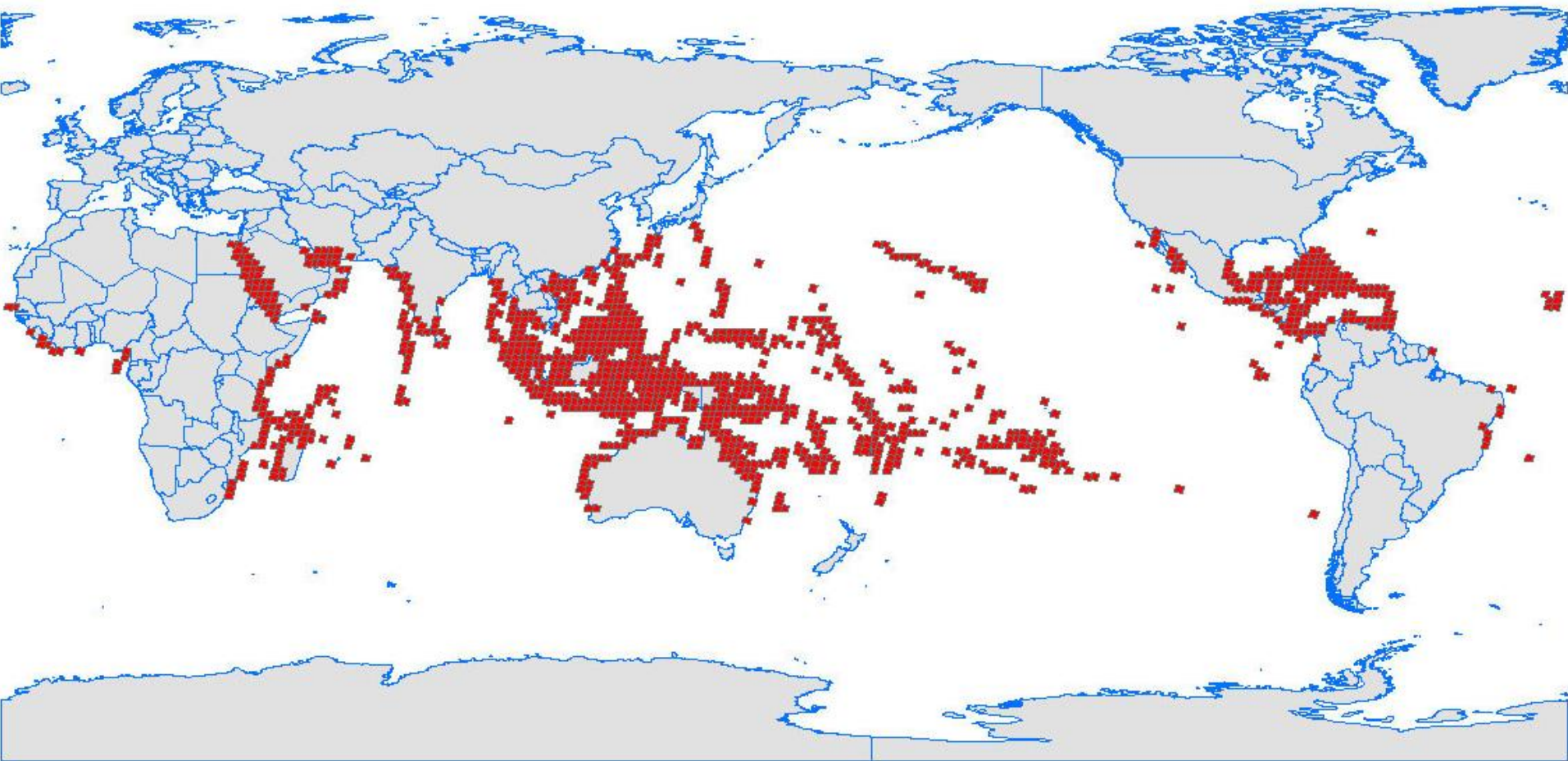


Coral reef

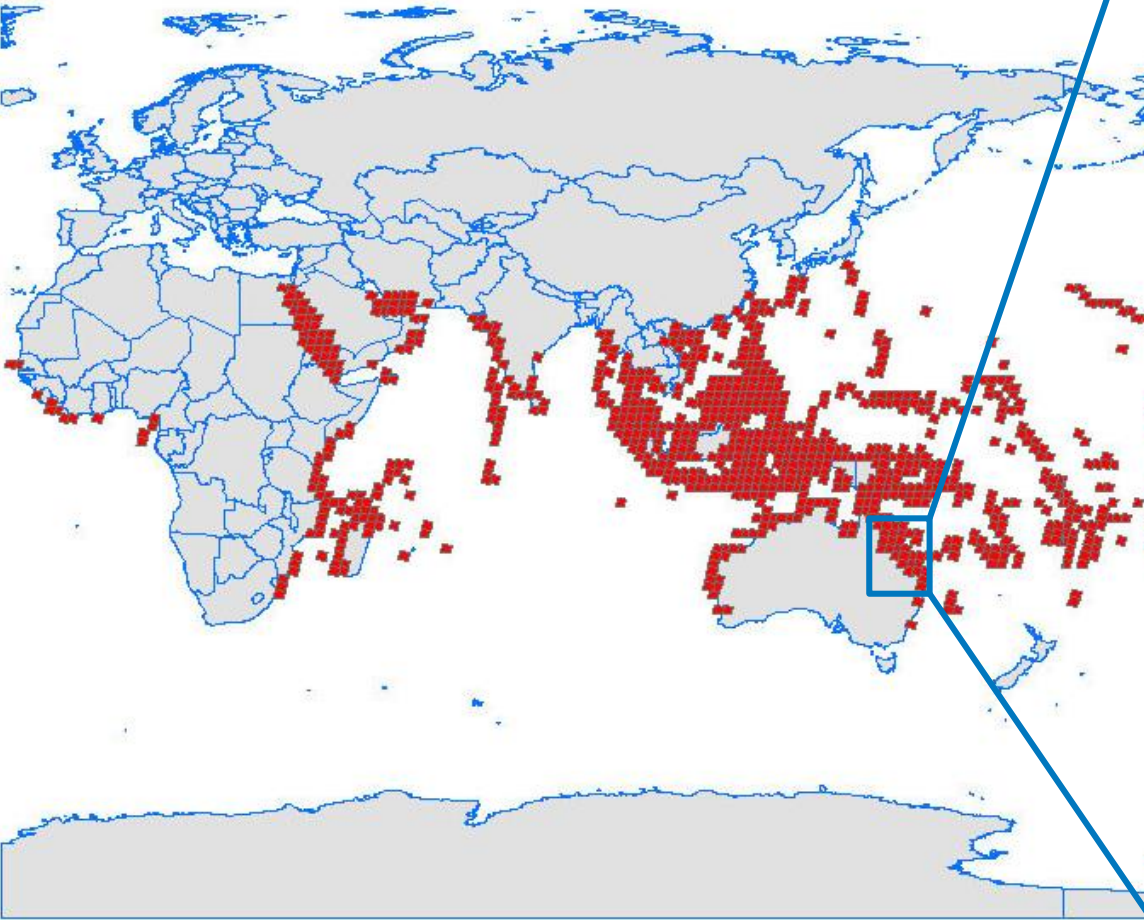


Sea grass meadow

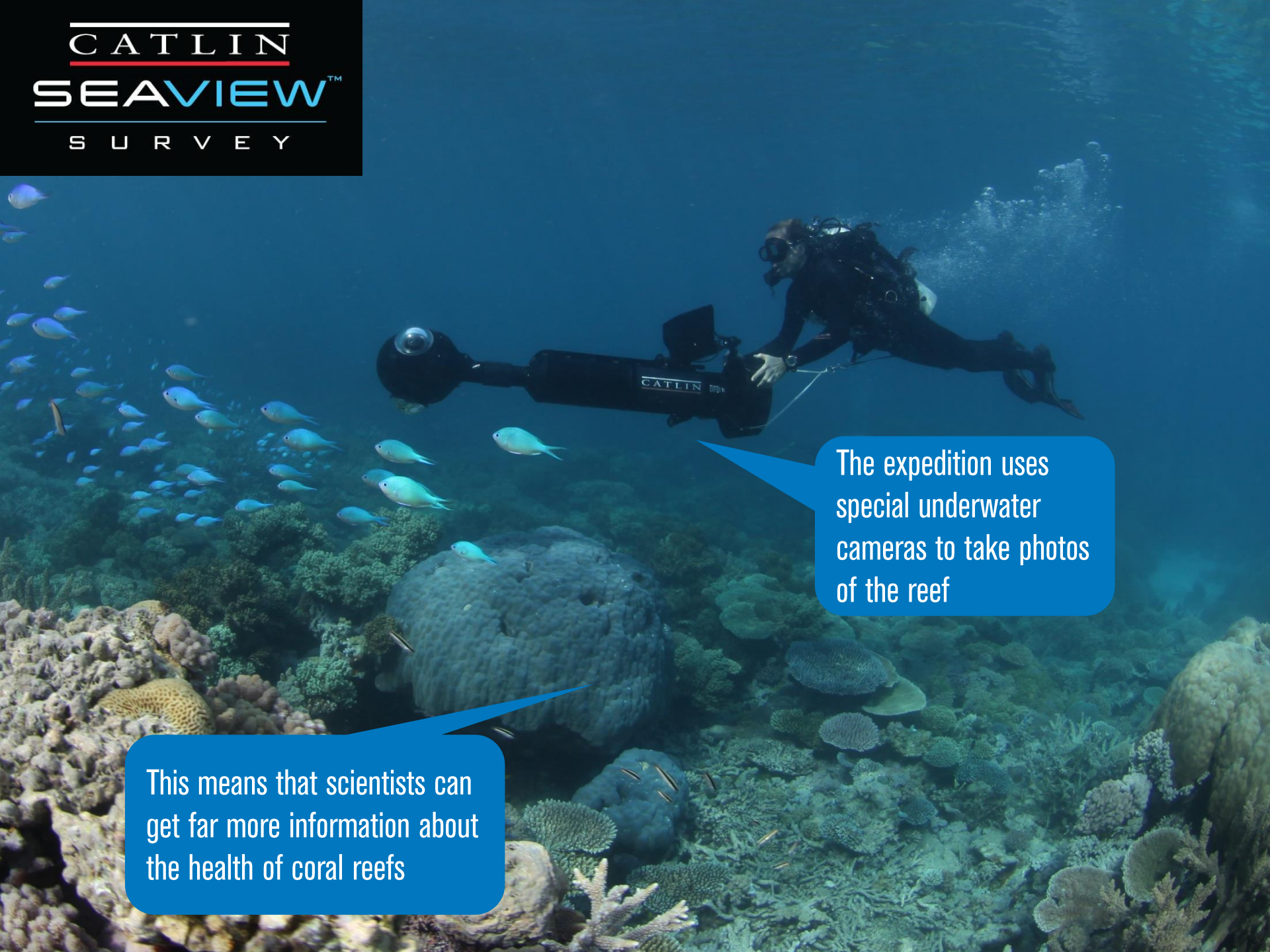
Where are the world's coral reefs?



The Catlin Seaview Survey started on the Great Barrier Reef...



CATLIN
SEAVIEW™
SURVEY

A diver in a black wetsuit and mask is operating a large, black, cylindrical underwater camera system. The system has a spherical camera lens at the front and a handle at the back. The diver is positioned above a vibrant coral reef. A large, grey, brain-like coral is prominent in the foreground. Numerous small, blue and white fish are swimming in the water. The background is a deep blue ocean.

The expedition uses special underwater cameras to take photos of the reef

This means that scientists can get far more information about the health of coral reefs

The photos from the survey are then 'stitched' together...



LADY ELLIOT ISLAND - LADY ELLIOT ISLAND

13 MAY, 2012



VIRTUAL DIVE MODE

OTHER LOCATIONS ▾

ABOUT LOCATION +



Lady Elliot Island



Lady Elliot Island



Lady Elliot Island



Lady Elliot Island



Lady Elliot Island



Lady Elliot Island



Lady Elliot Island



Lady Elliot Island



Lady Elliot Island



Lady Elliot Island



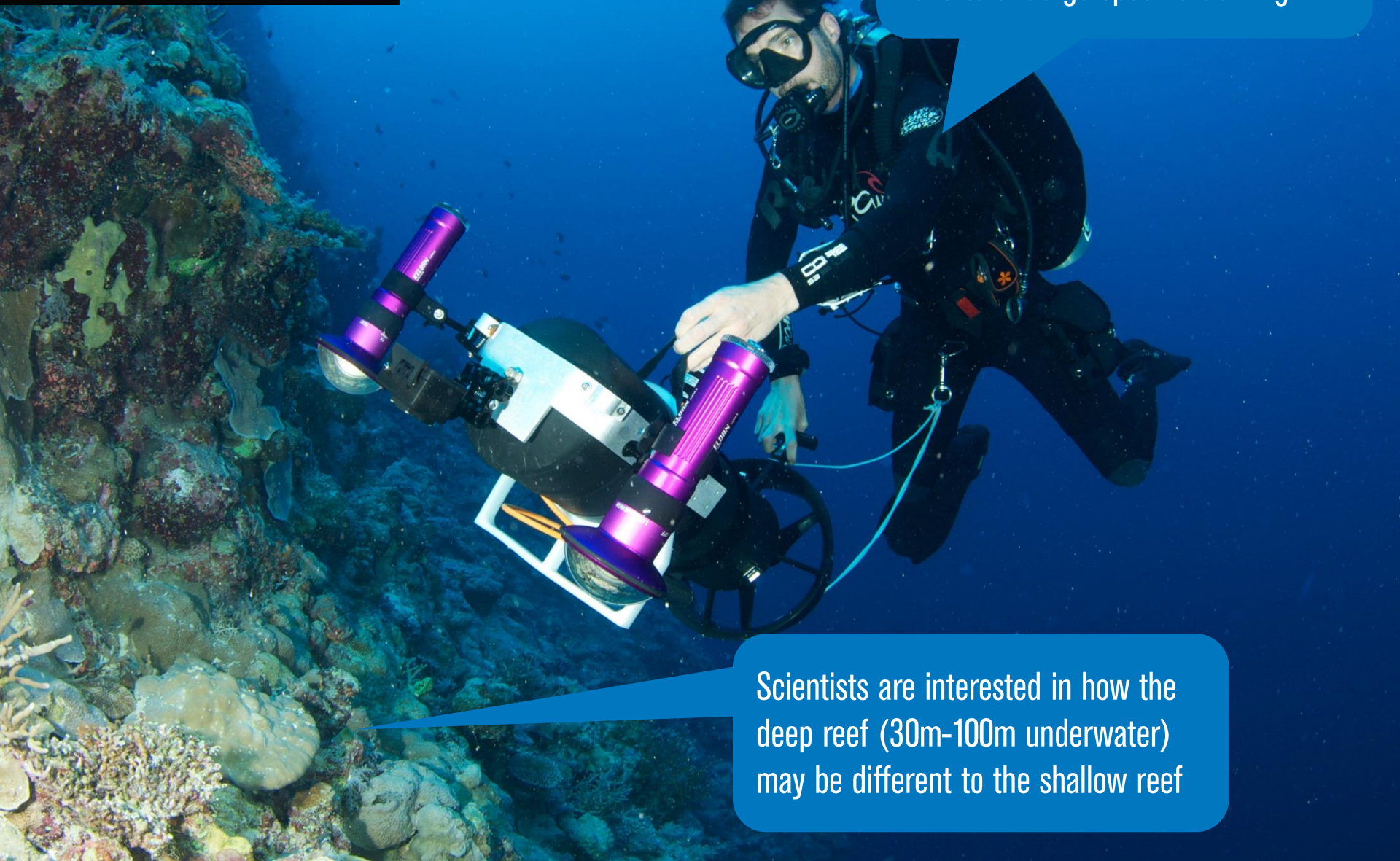
Lady Elliot Island



Lady Elliot Island



The science divers exploring down to 40m need special equipment and have to undergo specific training



Scientists are interested in how the deep reef (30m-100m underwater) may be different to the shallow reef

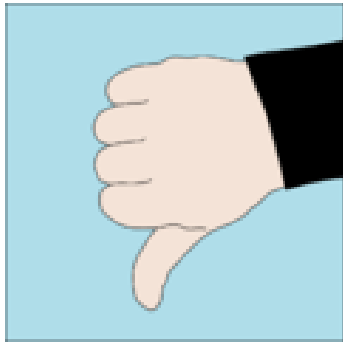
What issues do you think the team may face working underwater?



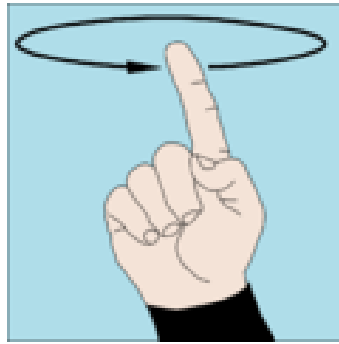
One of the issues that scientists face working underwater is that they cannot speak to each other. Can you practise the 'dive signs' that they use? Maybe you can use them on a silent virtual dive...



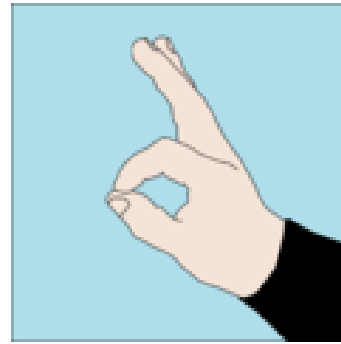
Ascend (go up)



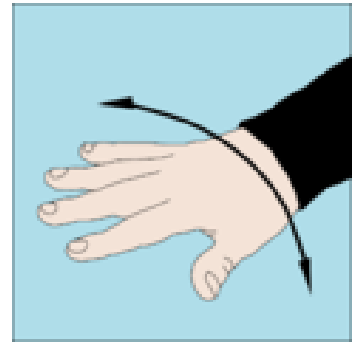
Descend (go down)



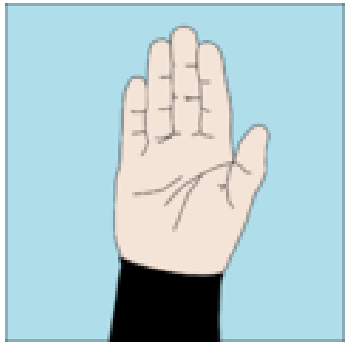
Turn around



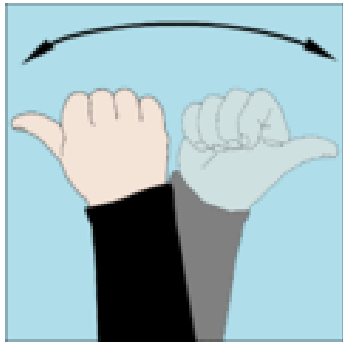
Are you OK? I am OK



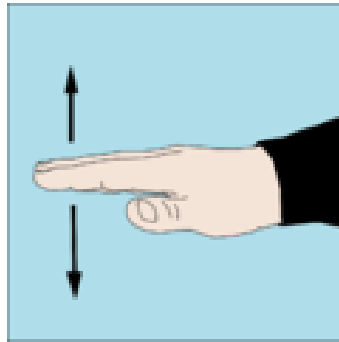
Something is wrong



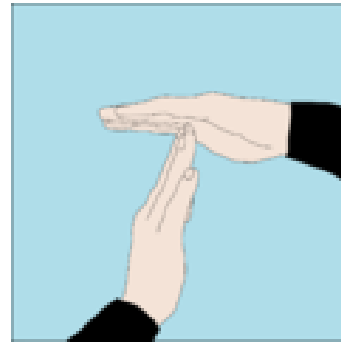
Stop!



Which direction?



Take it easy, slow down, relax



Time to head back

Photo credits

Slide	Photo	Credit
4	Rocky shore	Mark Nightingale
4	Open ocean	Digital Explorer
4	Sea grass meadow	NOAA
7	Coral reef map	NASA
8	Coral reef map	NASA
13	Dive signs	Peter Southwood

All other images and photos Catlin Seaview Survey